

**COMFORT
CLICK**

INCLUSIEF
GEÏNTEGREERDE
ONDERVLOER

Solidfloor

INSTALLATION MANUAL HERRINGBONE COMFORT CLICK

UNIZIP®
PATENTED TECHNOLOGY

YOU WILL NEED:



Pencil or marker
(for marking the
floorboards)



Ruler or
tape measure



Try square
(for marking the
herringbone pattern)



Chalk line
(for marking the
centerline)



Saw
(jigsaw or
circular saw)



Optional spacers
(5/10mm)



Rubber mallet
and tapping block

INSTALLATION MANUAL SOLIDFLOOR MANISON HERRINGBONE COMFORT CLICK WITH UNIZIP CLICK SYSTEM

IMPORTANT INFORMATION

Contact the point of sale if you are unsure about any part of the installation and maintenance instructions or the warranty conditions. Solidfloor Comfort Click floors are PVC floors that feel soft and warm underfoot. The floors are sound-absorbing and 100% waterproof. The advantage of Comfort Click is that an underlay is already integrated, allowing the floorboards to be placed directly on the subfloor.

General

- The floor must be acclimatized flat on the ground for at least 48 hours in the room where the floor will be installed.
- This floor should be installed as a floating floor. It is not suitable for gluing, screwing, nailing, or any other fixed method.
- There should be a minimum clearance of 5/10 mm around all walls or other fixed elements (pillars, kitchens, or baths) to allow the floor to expand and contract.
- The advantage of Comfort Click is the integrated underlay. It is essential that no other underlay is installed under the Comfort Click floorboards. If this happens, it may break the click connections.
- In large or continuous spaces, expansion profiles should be used. For a laying area of more than 10 meters in length or width, expansion joints (at least 2 cm wide) should be used. This should also be considered when extending into other rooms. The floor should be interrupted at a doorway. Movement joints can be neatly covered with profiles.
- Never install heavy, permanent, and structural elements such as kitchen islands or stairs on top of the floor.
- The indoor climate should be between 16 and 23°C with a relative humidity between 30 and 60%. Do not install the floor at a room temperature below 16°C.
- Check if the floorboards are flawless and undamaged, as the warranty only applies to hidden defects. If in doubt, contact the point of sale.

Subfloor – Substrate and Pretreatment

Solidfloor Comfort Click can be installed on a reasonably flat and smooth or properly prepared subfloor of concrete, cement, anhydrite (calcium sulfate), wood, plywood, chipboard, and ceramic tiles. Good preparation is essential for a trouble-free installation and crucial for the finish. Although Comfort Click is remarkably suitable for renovating subfloors that are not perfectly flat, it is possible that larger irregularities, steps, and sudden level differences in the subfloor may be visible or become visible through the finished floor and, therefore, need adequate preparation before installation. Solidfloor Comfort Click has the ability to bridge small gaps up to 30 mm, joint lines, joints, and cracks up to 10 mm in the subfloor. Check the subfloor for the following points:

- The subfloor must be hard, structurally sound, relatively flat, clean, and dry, with no variations in height. Additionally, the subfloor must be free of defects and suitable for this application.
- If the residual moisture in the subfloor exceeds the prescribed values, a surface moisture-resistant membrane (DPM) must be installed, regardless of whether the floors are old or new. Always use a reliable construction moisture meter. Maximum residual moisture is 2% for concrete subfloors and 0.3% for calcium sulfate (anhydrite) subfloors.
- Remove old adhesive residues and old or loose leveling residues.
- Ensure that the subfloor is free of chemical products or other stains or products that could potentially damage the floor.

- Irregularities in the subfloor must not exceed 5 mm over a length of 2 m (in the UK, this corresponds to Surface Regularity 2 (SR2)). This measurement is performed with a suitable straight edge or level. Fill or level irregularities where necessary. Choose a suitable leveling layer to ensure that no irregularities are visible through the surface of the finished floor. All preparatory materials must be used in accordance with the manufacturer's recommendations and national standards for resilient floor coverings.
- Ensure that the subfloor is completely clean and dry before installation.

Underfloor Heating

The floor may only be laid on warm water underfloor heating. With underfloor heating, the temperature of the substrate must be and remain lower than 28°C everywhere. The heating system must be in operation for at least 4 weeks after the start-up protocol according to the supplier before the floor is laid to prevent shrinkage and expansion of the substrate. Note: If the underfloor heating is turned off after installation (or accidentally turns off through an automatic function or at night), gaps and cracks may occur. The supply temperature of the underfloor heating must not exceed 38 °C. This instruction applies only to warm water underfloor heating and underfloor heating with cooling, provided it is equipped with a condensate protector. Installation on electric underfloor heating is not allowed. LVT-SPC/PVC click should not be installed on underfloor heating systems installed before 1990. These systems generally produce too high temperatures. In the case of a cooling system, the system must be equipped with a condensate protector, ensuring that the water in the floor pipes will not be lower or deviate by more than 3°C from the room temperature.

In case of doubt about the correct acclimatization of the floorboards, do not continue laying but first contact your sales point for further advice. The final result depends greatly on the conditions under which the floorboards are laid.

To learn more about Solidfloor's warranty conditions, visit the website, where you will find all the necessary information.

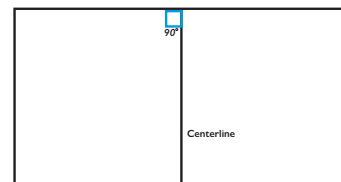
Watch the Solidfloor installation instruction video online:



INSTALLATION MANUAL

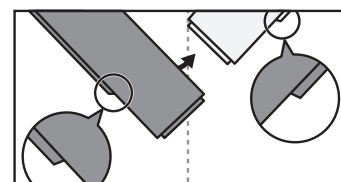
1

Determine (viewed from the starting wall) the center of the room. Use a chalk line or builder's cord to create a line perpendicular to the starting wall and pull it tight. This is the centerline.



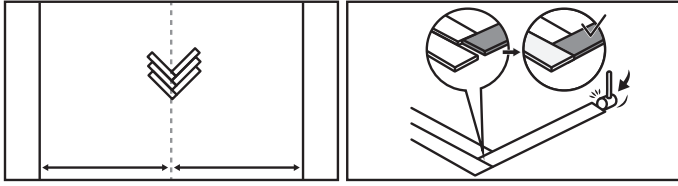
2

Connect the first two panels together. Pay attention to placing the tongue on the long side of the panels on the outer side. The panels must be perfectly connected to each other.

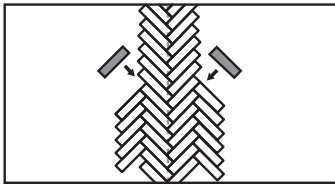


3

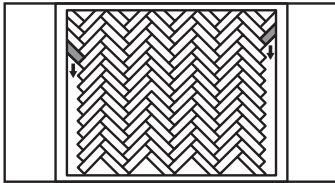
Attach two more panels to the first ones. In this process, it is best to exert weight on the first two panels with your knees to prevent them from shifting. The panels must be perfectly connected to each other. If necessary, gently tap the panels with a rubber hammer and tapping block. Be careful not to let the rest of the panels shift. Use your knees to hold the panels in place.

**4**

Finish the row completely. Always sit at your work to prevent the panels from shifting. Leave at least 5/10 mm space near walls/frames.

**5**

You can connect the new panels on both sides of the row.

**6**

Use a sliding bevel to determine the angle for the end pieces. Leave at least 5/10 mm space near walls/frames. Cut the LVT panel and break it in half. Use wood glue to secure the short pieces.

FINISHING, MAINTENANCE, AND WARRANTY

SPECIAL FEATURES AND FINISHING

Moist Areas

In moist areas, we recommend sealing the floor at connections to walls and sanitaryware with polyurethane sealant. This floor cannot be used as a shower floor.

Finishing

Finish the wall with a neat skirting board. After installation, the floor is immediately walkable and can be loaded.

MAINTENANCE

Like everything you use daily, a floor on which you live must also be maintained. Fortunately, Solidfloor Comfort Click is very maintenance-friendly and easy to care for. Solidfloor has developed two different products specifically for its floors.

Easy Clean

If it's time for the periodic deep cleaning and you want to clean your floor intensively, use Solidfloor Easy Clean. Always read the instructions before use.

Easy Protect

After intensive cleaning, use Solidfloor Easy Protect to give the floor a durable protective layer so that it can withstand wear and tear for a while.

PROVISIONS

Preventive Tips

Use a good doormat to prevent moisture and dirt from being tracked inside. Avoid rubber floor mats and black furniture caps. Provide chair legs and other furniture with high-quality felt caps and do not drag heavy objects over the floor. If furniture has wheels, make sure these wheels are suitable for a flat vinyl floor covering (no rubber). A floor mat under the office chair is recommended to prevent damage.

WARRANTY CONDITIONS

This floor has been carefully produced. If, despite the period indicated on the packaging from the purchase date, there are hidden material and/or production defects, the following warranty conditions apply:

- If you notice visible defects in the product after opening the packaging, report this to your point of purchase before processing.
- The warranty applies to hidden production defects and can never exceed the value of the delivered material. Parts with visible defects should not be processed. In case of damage, economic depreciation will be taken into account. The residual value is determined based on the remaining warranty period of your floor.
- Warranty claims can only be made upon presentation of the invoice or purchase receipt.
- The complete warranty conditions of Solidfloor can be found on the website.

Do you have a question? Then contact the point of purchase.




Warranty Expires

- In case of damage due to wear and tear, damage, and cracks on the wear surface as a result of incorrect use, falling objects, sand ingress, and/or processing with sharp tools.
- Due to rough and/or improper use.
- Due to any other careless use of the product in question.
- The complete warranty conditions of Solidfloor can be found on the website.
- If it could already be determined before processing that the product had a defect.
- Processing of the material or application in unsuitable spaces.
- Installation on unsuitable subfloors or climatic conditions other than specified in these processing instructions.

These warranty conditions do not affect your legal rights and obligations. Use class 23/33 (intensive residential use and intensive commercial use).



Solidfloor
Abram Dudok van Heelstraat 4
1096BE Amsterdam
www.solidfloor.com

 facebook.com/solidfloor.nl
 pinterest.com/floortjesol
 instagram.com/solid.floor

